

TEQUILA

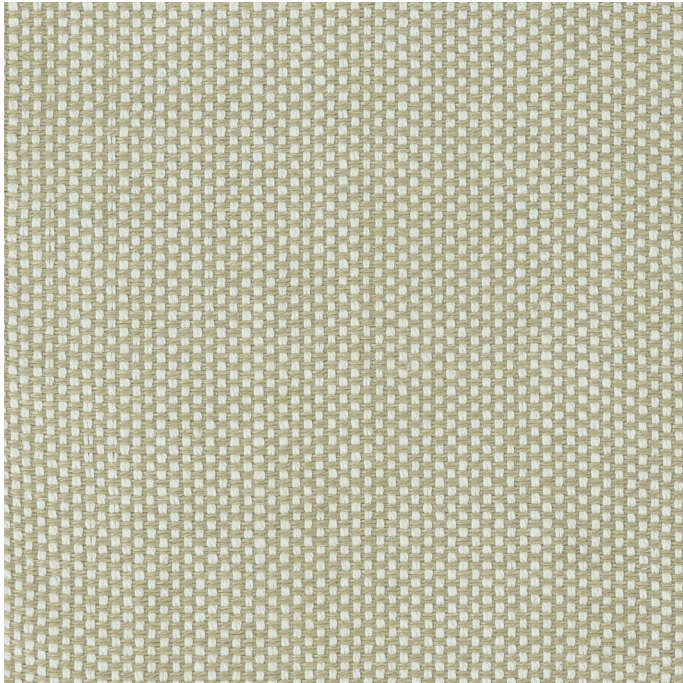


Image detail approx. 40 x 40 cm



article: TEQUILA
composition: 82% CA / 18 % PL
weight (g/sqm): 572
width (cm): 142
type: upholstery fabric
average piece length (m): 25
dyeing: yarn dyed

maintenance:



abrasion resistance: 25000 UNI EN ISO 12947-1
pilling: 2/3 UNI EN ISO 12945-2
seam slippage warp: 2 BS EN ISO 13936-2 :2004
seam slippage weft: 2 BS EN ISO 13936-2 :2004

colour fastness:

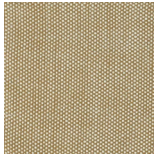
to light: 7 UNI EN ISO 105 B02
to light - high temperature: 6/7 UNI EN ISO 105 B04:1994
to rubbing dry: 4 UNI EN ISO 105 X12
to rubbing wet: 3 UNI EN ISO 105 X12
to sea water: 4/5 UNI EN ISO 105-E02:2013
water chloride: 4/5 UNI EN ISO 105-E03:2010



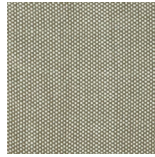
available colours:



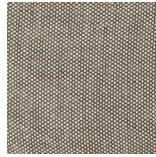
bambu



beige



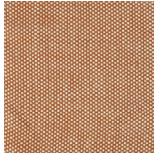
noce



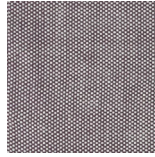
sigaro



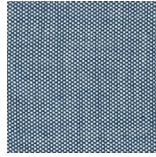
canarino



rame



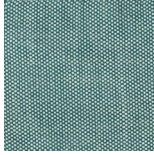
vino



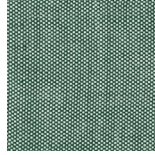
notte



artico



laguna



foglia

