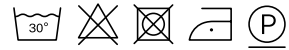


BITTER

article: BITTER
composition: 82% CA / 18 % PL
weight (g/sqm): 565
width (cm): 142
type: upholstery fabric
average piece length (m): 25
dyeing: yarn dyed

maintenance:



abrasion resistance: 25000 UNI EN ISO 12947-1
pilling: 2/3 UNI EN ISO 12945-2
seam slippage warp: 2 BS EN ISO 13936-2 :2004
seam slippage weft: 2 BS EN ISO 13936-2 :2004

colour fastness:

to light: 7 UNI EN ISO 105 B02
to light - high temperature: 6/7 UNI EN ISO 105 B04:1994
to rubbing dry: 4 UNI EN ISO 105 X12
to rubbing wet: 3 UNI EN ISO 105 X12
to sea water: 4/5 UNI EN ISO 105-E02:2013
water chloride: 4/5 UNI EN ISO 105-E03:2010

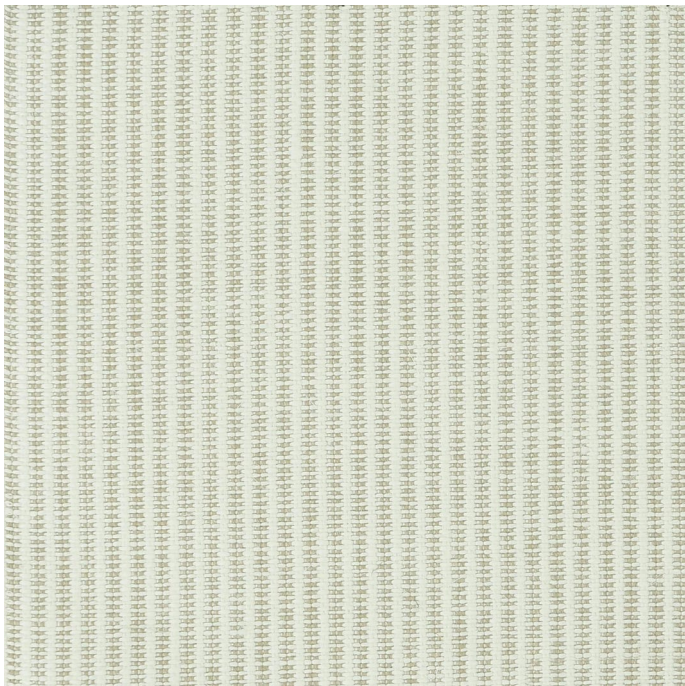


Image detail approx. 40 x 40 cm



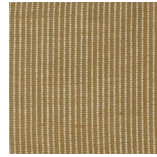
available colours:



neve



conchiglia



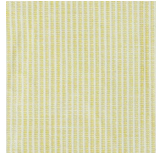
cammello



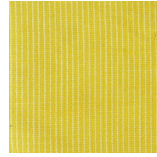
tortora



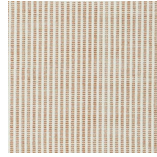
prugna



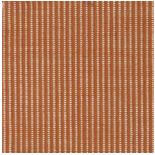
limone



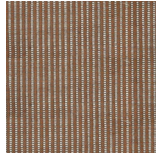
sole



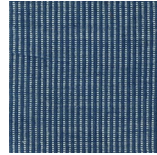
mandarino



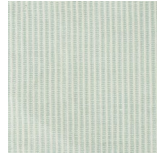
mango



alba



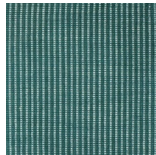
blu



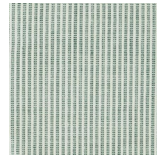
cielo



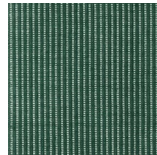
acquamarina



pavone



quadrifoglio



foresta

