

## Uni 559 Island



Image detail approx. 40 x 40 cm



**article:** Uni 559 Island  
**composition:** CO 44% VI 35% PL 20% PA 1%  
**weight (g/sqm):** 678  
**width:** 136 cm  
**type:** upholstery fabric  
**average piece length:** 25 m  
**dyeing:** yarn dyed

**maintenance:**



<b>abrasion resistance:</b>	UNI EN ISO 12947-1	<b>20000</b>
<b>pilling:</b>	UNI EN ISO 12945-2	<b>3/4</b>
<b>seam slippage warp:</b>	BS EN ISO 13936-2 :2004	<b>1</b>
<b>seam slippage weft:</b>	BS EN ISO 13936-2 :2004	<b>6</b>

**colour fastness:**

<b>to light:</b>	UNI EN ISO 105 B02	<b>5</b>
<b>to rubbing dry:</b>	UNI EN ISO 105 X12	<b>3/4</b>
<b>to rubbing wet:</b>	UNI EN ISO 105 X12	<b>3</b>



available colours:



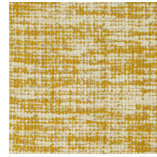
neve



gesso



cipria



senape



terra



muschio



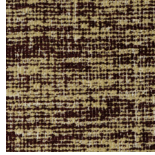
foglia



vaso



bruciato



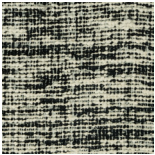
bordeaux



ossigeno



ghisa



zebra

