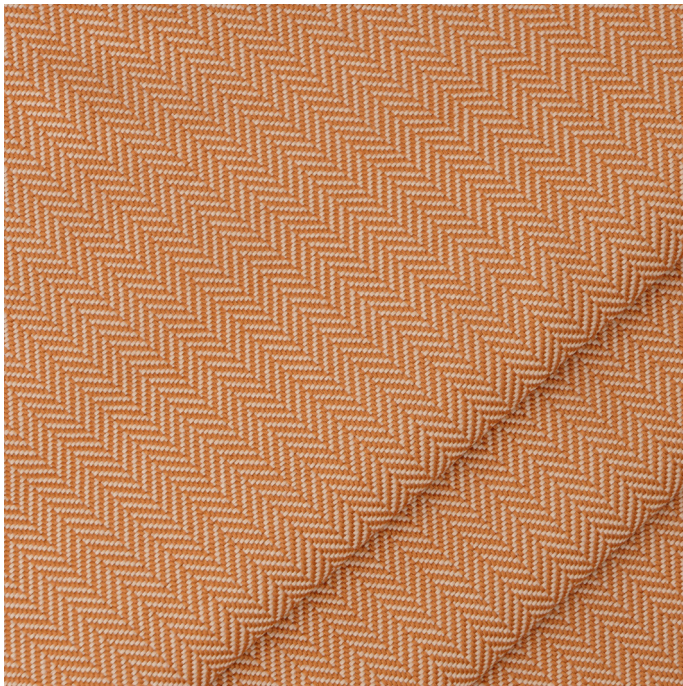


# Honolulu



Image detail approx. 40 x 40 cm



**article:** OD FR HONOLULU RC  
**composition:** PFR 100%  
**weight (g/sqm):** 510  
**width:** 140 cm  
**type:** upholstery fabric  
**average piece length:** 25 m  
**dyeing:** yarn dyed

**maintenance:**



**abrasion resistance:** UNI EN ISO 12947-1 >100000  
**pilling:** UNI EN ISO 12945-2 5  
**colour fastness:**  
**to light:** UNI EN ISO 105 B02 7/8  
**to light - high temperature:** UNI EN ISO 105 B04:1994 7/8  
**to rubbing dry:** UNI EN ISO 105 X12 5  
**to rubbing wet:** UNI EN ISO 105 X12 5  
**to sea water:** UNI EN ISO 105-E02:2013 5  
**water chloride:** UNI EN ISO 105-E03:2010 4/5

**flame retardance:**

**CLASSE 11M:** UNI 9175 IMBOTTITO PASS  
**B1:** DIN 4102 B PASS  
**M1:** NF P 92 507 M2  
**cigarette test:** UNI EN 1021-1:2014 PASS  
**match flame test:** UNI EN 1021-2:2014 PASS  
**CRIB 5:** BS 5852:2006 PASS

**marine equipment:**

**IMO-MED 3.20** DIRECTIVE 2014/90/EU PASS



**available colours:**



**conchiglia**



**moneta**



**lavanda**



**platino**



**sasso**



**mango**



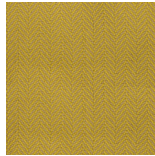
**tramonto**



**tabacco**



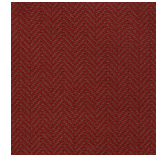
**corda**



**limone**



**malva**



**bordeaux**



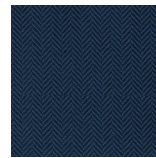
**artico**



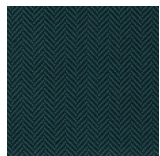
**nautico**



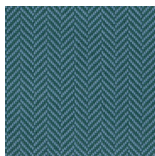
**elettrico**



**aviazione**



**jade**



**river**

**notes:**

- 100% mechanically recycled polyester yarn from post-consumer plastic bottles
- certified and fully traceable, made in Italy
- embedded with permanent flame retardant superior performances
- IMO-Med certification

